



Lighting Your Life Since 1970

## MX-L120DC 120V LED Under Cabinet Light



Featuring: **LUXEON** PHILIPS LUMILEDS

### WARNING:

These fixtures present a possible shock or fire hazard if improperly installed. Fixtures should be installed in accordance with the below instructions, local electrical codes or NEC compliance. To avoid electrical shock, disconnect power prior to installation. It is Recommended that fixture be installed by a licensed electrician.

Model No.	Length	Input Watts
89922	7"	5W
89923	13"	10W
89924	21"	15W
89926	30"	20W

### Direct Wire Installation

1. Remove lock screw on side and slide locking tabs to rear to open access door.
2. Remove knockout and install romex connector into wire hole and tighten nut. **(Figure 3)**
3. Strip outer romex sheath back minimum of 5" and pull solid core wire through connector until sheath is into the connector and tighten.
4. Strip 3/8" of jacket from solid core wire and insert into quick stab connectors. (Black to Black, White to White, and Green for Ground)
5. Position fixture onto cabinet and run pre-installed screws into bottom of cabinet surface.
6. Close access door and slide clips forward. Reinstall lock screw

### Direct Wire Box Installation

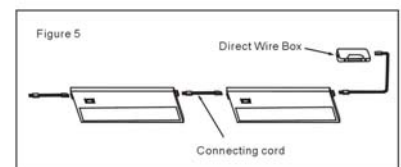
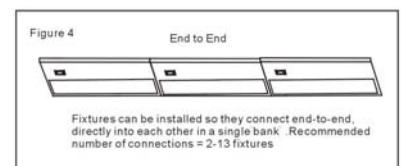
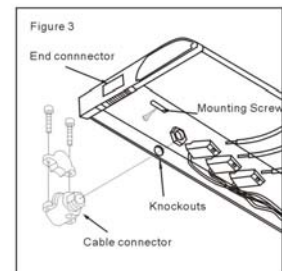
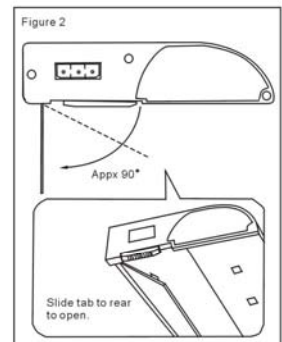
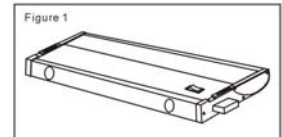
1. Remove cover from optional direct wire box 87885/E87885.
2. Pull romex wire through wire gate in back of box.
3. Position box and screw to bottom of cabinet.
4. Cut romex so that there is a 6" lead and strip outer sheath.
5. Strip 3/8" of jacket from solid core wire and insert into quick stab connectors (Black to Black, White to White, and Green for Ground)
6. Replace cover on box and tighten
7. Determine location of 1<sup>st</sup> fixture and use correct length optional connecting cord from box to end of 1<sup>st</sup> fixture.

### Plug In Installation

1. Remove lock screw on side and slide locking tabs to rear to open access door.
2. Position fixture onto cabinet and run pre-installed screws into bottom of cabinet surface.
3. Close access door and slide clips forward. Reinstall lock screw
4. Plug into fixture optional power cord 87880/E87880 and then into wall outlet.

### Dimming

These fixtures may be dimmed with a standard triac rotary or slide dimmer incandescent dimmer. Dimming range will vary by dimmer. For maximum dimming range we recommend Lutron C-L dimmers for LED and fluorescent.



NOTE: Maximum units installed cannot exceed 350 watts